

Gooxi Eagle Stream 8U 8-GPU Server Specifications

I Product Type

8U rackmount server

II Introduction

SY8108G-G4 is an AI computing server developed on the latest Intel Eagle Stream platform, delivering powerful computing performance and exceptional scalability. It supports CPU-GPU Direct Connection and CPU-GPU Switch topology, meeting application requirements across diverse AI workloads. It is suitable for artificial intelligence, cloud computing, virtualization, big data analytics, and digital twin applications.

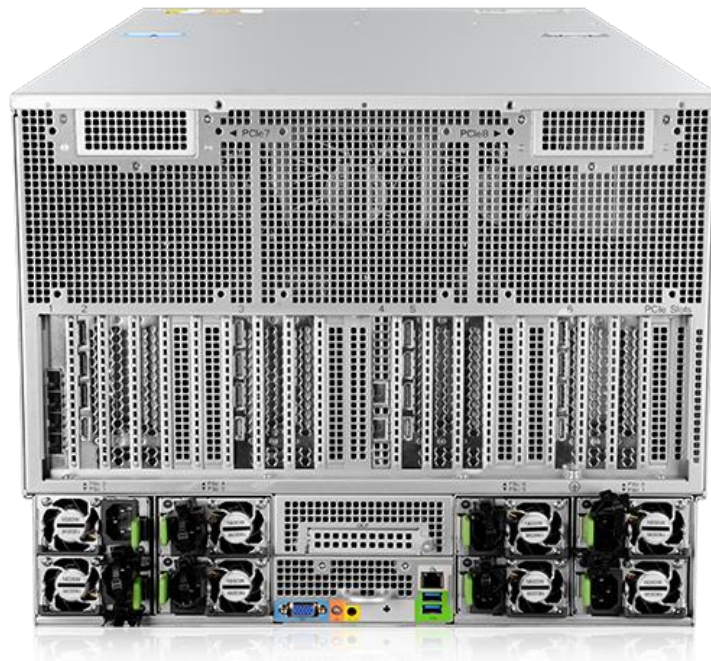
III Product Features

- ◆ Supports 2 4th/5th Gen Intel® Xeon® Scalable processors, maximum TDP 350W
- ◆ Supports up to 32 DDR5 memory slots, speed up to 5600MT/s, memory bandwidth increased by 75%
- ◆ Onboard 2 M.2 SATA/NVMe interfaces
- ◆ Supports 2 Slimline x4 interfaces (SATA), onboard 2 M.2 SATA/NVMe interfaces
- ◆ Supports CPU-GPU Direct Connection mode, up to 8 dual-width to 4.5-width GPU
- ◆ Supports SATA/SAS/NVMe tri-mode drives for high-speed transmission and data storage

IV Pictures



[Front View](#)



[Rear View](#)



[Fan Version GPU Server](#)



[Blower Version GPU Server](#)

(Product pictures are for reference only, please refer to the actual product)

V Specifications

Product Type	8U Rackmount Server	
GPU Configuration	8-GPU Direct Connection (Fan Version)	8-GPU Direct Connection (Blower Version)
GPU Support	Supports 8 × 3-width to 4.5-width GPU	Supports 8 × 2-width to 2.5-width GPU
Processor	Supports 2 4th/5th Gen Intel® Xeon® Scalable processors, maximum TDP 350W	
Memory	Supports 32 DDR5 memory slots, DDR5 4400/4800/5600MHz	
PCIe Specification	Supports 13 PCIe expansion slots including 1 OCP 3.0 slot	
Storage Controller	RAID card controller, SAS card controller Onboard PCH supports 8 SATA interfaces Intel onboard NVMe controller	

Storage	Front panel: 12*2.5/3.5 SAS/SATA/NVMe
	Built-in storage: 2 Slimline x4 interfaces (SATA), 2 M.2 (2280/22110) (SATA/PCIe 3.0 x1)
Network	Optional OCP 3.0 network card Optional PCIe standard NIC supporting 1/10/25/40/100/200/400GE
Fan	Standard 6 × 6056 + 6 × 12038 fan
Interfaces	Front: 2 USB 3.0, 1 VGA
	Rear: 2 USB 3.0, 1 VGA, 1 Serial port, 1 RJ45 management port (optional 2 x 10G RJ45 network ports)
	Internal: 1 USB 2.0
Power Supply	Supports 8 power modules, options of 1600W/2000W/2200W/2700W/3200W Supports hot-swap and N+N/N+M redundancy
IPMI	Supports Redfish, SNMP, IPMI 2.0 standard interfaces
Security	Administrator password, TPM 2.0, chassis intrusion alarm, BMC redundancy
OS	Microsoft Windows Server, RedHat Enterprise Linux, SUSE Linux Enterprise Server, CentOS, Ubuntu, VMware ESXi, etc.
Operating Temperature	5°C~35°C
Dimensions	364.6mm (H) x 446mm (W) x 910mm (D)

(The final interpretation right belongs to Gooxi)