

## Gooxi Eagle Stream 2U Dual-Socket High-End Server Specifications

### I Product Type

2URackmount Server

### II Introduction

Gooxi Eagle Stream 2U dual-socket high-end server, supports 1 or 2 4th/5th generation Intel® Xeon® Scalable processors, 32 DIMM DDR5 memory slots, supports 2 M.2 interfaces, 1 RJ45 management port, and 12 PCIe 5.0 expansion slots. It is suitable for virtualization, cloud computing, big data processing, high-performance computing, distributed storage, enterprise markets, or telecommunications business applications, and more.

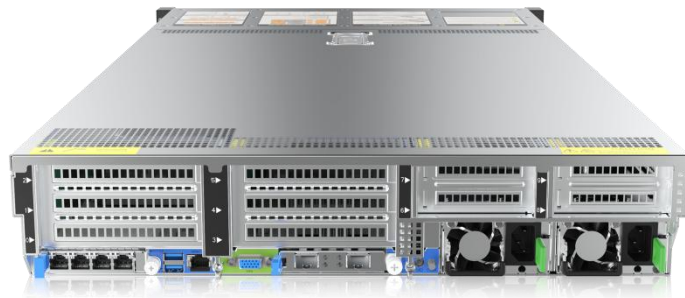
### III Features

- ◆ Supports 1 or 2 4th/5th generation Intel® Xeon® Scalable processors, with a maximum TDP of 350W.
- ◆ Supports a maximum of 32 DDR5 memory slots, with memory frequencies of 4400/4800MHz.
- ◆ Supports 2 M.2 SATA interfaces.
- ◆ Modular design, allowing various combinations of PCIe and hard drive options.
- ◆ Up to 12 PCIe 5.0 expansion slots, with optional support for 4 double-width full-height full-length GPU cards

### IV Pictures



Front View of the 2U 12-Bay Model



**Rear View of the 2U 12-Bay Model**  
(Product pictures are for reference only, please refer to the actual product)

## V Specifications

Product Series	SL201-D12R-NV-G4
Product Type	2U 12-bay
System Size	799*433.4*87.6mm (depth*width*height)
Processor	Supports 1 or 2 4th/5th generation Intel® Xeon® Scalable processors, with a maximum TDP of 350W
Memory	32 DDR5 memory slots, support DDR5 RDIMM-3DS/RDIMM 4400/4800MHz Memory
Internal Storage Interface	3 Mini SAS HD interfaces, 2 SATA M.2 SSD interfaces
External Hard Drive	Supports 12 hot-swappable 3.5/2.5-inch SAS/SATA/U.2 hard drives in the front, optional 2 modules of 2x3.5-inch hard drives or 2 modules of 2x2.5-inch hard drives in the rear
External Ports	Front ports: 1 VGA, 2 USB 3.0
	Rear ports: 1 VGA, 1 COM port, 2 USB 3.0, 1 RJ45 Gigabit management port
PCIE Expansion Form	6 full-height PCIe slots, 4 half-height PCIe slots, 2 OCP 3.0 slots
PCIE Expansion Specifications	<p>Riser1/2:</p> <ul style="list-style-type: none"> <li>◆ 1*Full height PCIe 5.0 x16, 2* Full height PCIe 5.0 x8</li> <li>◆ 2* Full height PCIe 5.0 x16</li> </ul> <p>Riser3/4 :</p> <ul style="list-style-type: none"> <li>◆ 2*half height PCIe 5.0 x8</li> <li>◆ 1*half height PCIe 5.0 x16</li> </ul> <p>OCP:</p> <ul style="list-style-type: none"> <li>◆ 2*OCP 3.0(PCIe 5.0 x8)</li> </ul>

Safety	Optional TPM module
Power Supply	Supports AC 220V 800W, 1300W, 1600W, 2000W, 2200W, 2600W redundant power supplies (adapted to actual power requirements)
Fan	Standard 4 hot-swappable N+1 redundant fans, supporting 8038/8056 specifications
IPMI	IPMI2.0
Management Port	1 dedicated RJ45 management port
Working Temperature & Humidity	Temperature 5°C~35°C/humidity 20%~80% RH non-condensing
Storage Temperature & Humidity	Short-term storage ( $\leq 72$ hours): Temperature -40°C ~ 70°C / Humidity 20% ~ 90% RH (non-condensing, including packaging) Long-term storage ( $> 72$ hours): Temperature 20°C ~ 28°C / Humidity 30% ~ 70% RH (non-condensing, including packaging)

## VI Order Info

Type	PN	Model	Description
Barebone	0.21.002.0238	SL201-D12R-NV-G4	Gooxi dual-socket Eagle Stream platform 2U 12-bay model, SATA/SAS/U.2 direct connection version, standard 800W 1+1 redundant power supply
<b>Optional Accessories</b>			
3.5-inch Hard Drive Module	4.00.101.0008	SL201-3.5-MM	2*3.5-inch/2.5-inch SATA/SAS disk, supports SGPIO (including high speed cable and power supply cable)
2.5-inch Hard Drive Module	4.00.101.0009	SL201-2.5-MM	2*2.5-inch SATA/SAS disk, supports SGPIO (including high-speed cable and power supply cable)
Slide Rail	3.11.001.0007	40-940	Three-section telescopic steel ball guide rail, fully extended length of 850mm, supports 1m-1.2m cabinets, with a load-bearing capacity of 45KG for the slide rail
RAID Card	3.03.252.0007	LSI 9361-8i (1GB cache)	LSI MegaRAID SAS 9361-8i (1 GB cache) RAID card, 8 SATA/SAS internal ports, PCIE3.0X8, data transfer rate 12Gb/s, supports RAID, RAID level 0/1/5/6/10/50/60.
RAID Card	3.03.252.0003	LSI 9361-8i (2GB cache)	LSI MegaRAID SAS 9361-8i (2 GB cache) RAID card, 8 SATA/SAS internal ports, PCIE3.0X8, data transfer rate 12Gb/s, supports RAID, RAID level 0/1/5/6/10/50/60.
HBA Card	4.00.104.0005	G3008H-PK	Gooxi self-developed LSI 3008 chipset, 12Gb/s SAS card
OCP3.0	1.23.222.0348	G82599L	Gooxi self-developed OCP3.0 network card, using G82599 chip, dual optical port 10G

# Gooxi

Network Card			network card
OCP3.0 Network Card	1.23.222.0417	G710L	Gooxi self-developed OCP3.0 network card, using XL710 chip, four optical port 10G network card
Network Card	4.00.104.0013	G82599-PK	Gooxi self-developed Intel G82599 chip, standard PCIe3.0x8 dual optical port 10G network card
Network Card	4.00.104.0008	G710-PK	Gooxi self-developed Intel XL710 chip, standard PCIe3.0x8 network card, 4*10G optical port
Power Supply Module	3.03.153.0049	GC800PMP	Gooxi 800W CRPS power module, 185x73.5x39mm; rated AC voltage 100V-240V, supports 240V DC
Power Supply Module	3.03.153.0047	GC1300PMP	Gooxi 1300W CRPS power module, 185x73.5x39mm; rated AC voltage 100V-240V, supports 240V DC
Power Supply Module	3.03.153.0053	GC1600PMP	Gooxi 1600W CRPS power module, 185x73.5x39mm; rated AC voltage 100V-240V, supports 240V DC
Power Supply Module	3.03.153.0054	GC2200PMT	Gooxi 2200W CRPS power module, 185x73.x40mm; rated AC voltage 100V-240V, supports 240V DC

(The final interpretation rights belong to Gooxi)