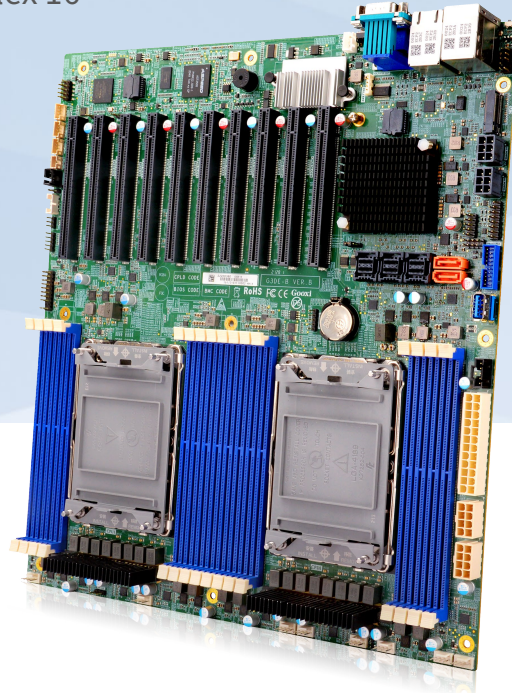


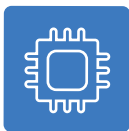
Ultra-high Density GPU Server Chassis 2nd Gen

- High performance: 1 or 2 Intel® Xeon® Scalable ICE Lake processor
- Massive capacity: supports 16 DDR4 2400/2666/2933/3200 MHz memory
- Superb expansion: supports 6 PCIe 8 and 4 PCIe 16
- Availability: single-board hardware adopts carrier-grade devices & processing tech



Smart Safety Remote Management

- Hot-swap SAS/SATA/NVME hard drives. RAID0/1/5/10/60 level based on different RAID controllers, RAID tech can ensure the hard drive switched online and the integrity of data when fails.
- Via BMC monitors system parameters, alarm prompting and log storage on the web management interface, technicians can locate and take measures via logs & alarm prompts to ensure the stable operation and reduce downtime.



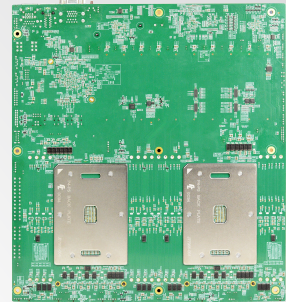
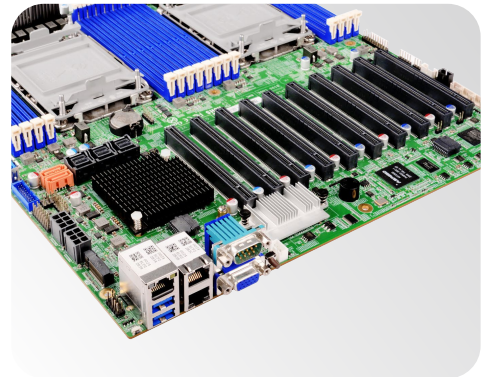
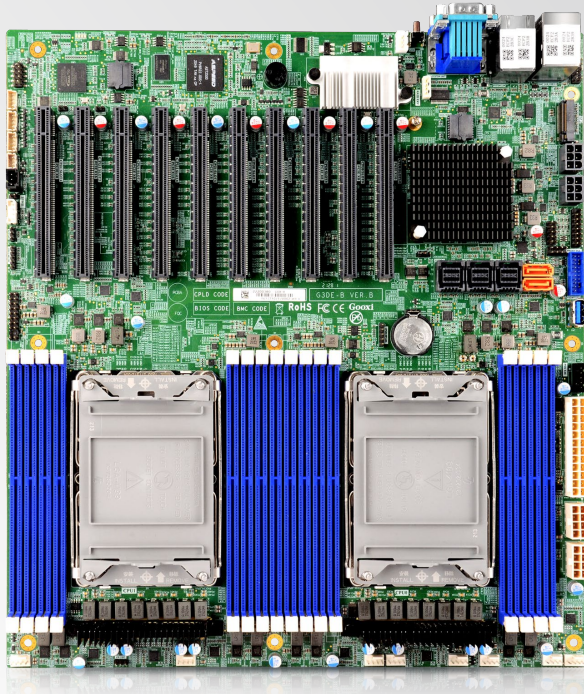
Ultra-high Computing Power

- Supports Intel® Xeon® Scalable (ICE Lake-SP $\leq 270W$), up to 40-core processors provide excellent performance. The highest frequency is 3.2GHz, the largest single core can be achieved with Intel® Turbo Boost tech: max. over-clock is 3.4GHz.
- Supports Intel® virtualization tech and integrates hardware-level virtualization functions, allowing the OS better uses hardware to handle virtualization work.



Massive Storage

- Supports 16* 2400/2666/2933/3200 MHz memory, DDR4 LRDIMM / RDIMM / NV-DIMM ECC memory, single capacity supports 16GB, 32GB, 64GB (RDIMM), 128GB (LRDIMM).
- Supports Intel® G2 Optane memory BPS (max. 512GB per DIMM), onboard 3 MiniSAS SFF-8643 connectors, and 2 SATA6.0Gbp.
- Supports 6 x PCIe8 (in PCIe16 slot) and 4 x PCIe 16 (2, 6, 7, 10 slot).



Specification

MB model	G3DE-B
Version	E-ATX F-standard motherboard, PCB Size: 12"(L) × 13"(W) (304.8 mm x 330.2 mm)
CPU	Supports 2 Intel® Xeon® ICE Lake processors, LGA4189 socket, TDP 270W
Chipset	Intel® C621A series server-specific chipset
Memory	Supports DDR4 ECC RDIMM/LRDIMM, memory frequency supports 2133/ 2400/ 2666/ 2933/ 3200 MHz Each CPU supports 8 Channels, each Channel has 2 DIMMs, total 16 DDR4 slots
Storage controller	Onboard 3* MiniSAS SFF-8643 ports, 2* 7pin SATA 3.0 ports (can support SATA DOM), 1* M.2(PCIe x 4) port External HBA: supports external (non-RAID) 12Gbps SAS HBA
Power supply	500W, 800W, 1200W, 1600W, 2200W hot-swap redundant PSU, optional support for 240V and 336V high-voltage DC PSU, -48V high-voltage DC PSU
External port & PCIE	Onboard: 1 VGA (AST2500), 2 USB3.0, 1 management LAN port, 1 COM port, 2 RJ45 network ports. Up to 10 PCIe expansion slots [6 PCIe x8 (in PCIe x16 slot) and 4 PCIe x16 (2, 6, 7, 10 slot), or 4 PCIe x8 (in PCIe x16 slot) and 5 PCIe x16 (2, 4, 6, 7, 10 slot), of which 2, 6, and 7 are PCIe4.0, and the rest are PCIe3.0]
Internet	2 RJ45 LAN Ports (1GbE) + 1 RJ45 IPMI LAN Port (1GbE)
Safety	TPM support
Management	Onboard iBMC management module, supports IPMI, SOL, KVM Over IP, virtual media, etc.
Operating system	Microsoft Windows Server, Red Hat Enterprise Linux, SUSE Linux Enterprise Server, CentOS, Ubuntu
Start mode supported	HDD (Internal), CD-ROM, U disk, PXE
Virtualization	Citrix Xen Server, Vmware ESXi, Linux KVM, Windows Hyper-V
IPMI	IPMI 2.0(ASPEED AST2500)
RoHS	Meets the requirements

Environment

Temperature	Operating temperature: 10°C - 35°C (indoor); extended operating temperature: 5°C - 40°C (in specific configuration); transportation storage temperature: -40°C - 70°C
Humidity	Operating humidity: 30% - 80% (non-condensing); storage humidity: 5% - 95% (non-condensing)